



GAT MONTHLY MEMBERSHIP PROGRESS REPORT

Results as of: 5/31/2022

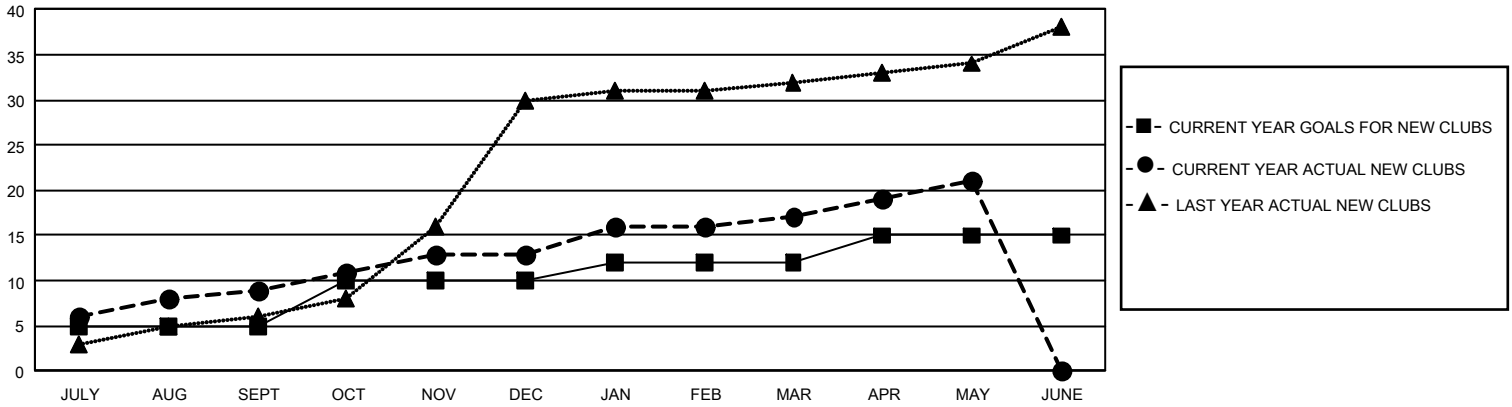
GMT Constitutional Area 6, Group L

REPORT DOES NOT INCLUDE CLUBS IN UNDISTRICTED AREAS.

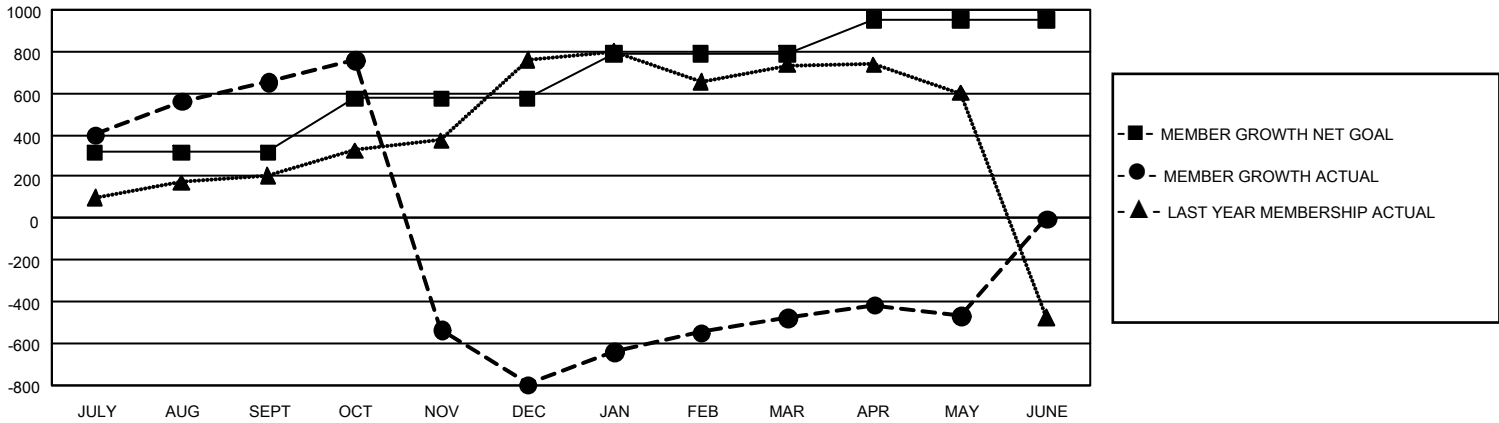
Clubs			
RESULTS FOR 2021-2022			
QUARTER	NEW CLUB GOAL	NEW CLUBS	DROPPED CLUBS
JULY/AUG/SEPT	15	9	4
OCT/NOV/DEC	15	4	2
JAN/FEB/MAR	6	4	0
APR/MAY/JUNE	9	4	0

Members			
RESULTS FOR 2021-2022			
QUARTER	MEMBER GROWTH NET GOAL	MEMBER GROWTH ACTUAL	DROPPED MEMBERS ACTUAL (including transfers)
JULY/AUG/SEPT	315	905	181
OCT/NOV/DEC	260	318	1,750
JAN/FEB/MAR	215	405	61
APR/MAY/JUNE	160	244	220

GOALS AND ACTUAL NEW CLUBS CUMULATIVE



GOALS AND ACTUAL MEMBERS CUMULATIVE



DROPPED CLUBS: 6	192 CLUBS OF 323 ADDED 1 OR MORE NEW MEMBERS	GENDER DISTRIBUTION	
		MALE 6,716 (60.49%) FEMALE 4,386 (39.51%) NON BINARY 0 (0.00%) PREFER NOT TO ANSWER 0 (0.00%)	
DROPPED MEMBERS		CLICK HERE FOR CUMULATIVE MEMBERSHIP DATA	TOTAL FAMILY UNIT MEMBERS 6,438
DECEASED 47 CLUB CANCELLED 1,368 OTHER 797 TOTAL 2,212	FAMILY MEMBERS PAYING HALF DUES 3,491		